



COOLTOP

NORDIC BLUE CENTRES, ICE BLUE SURROUND



QUEENSLAND SPORTS COURTS

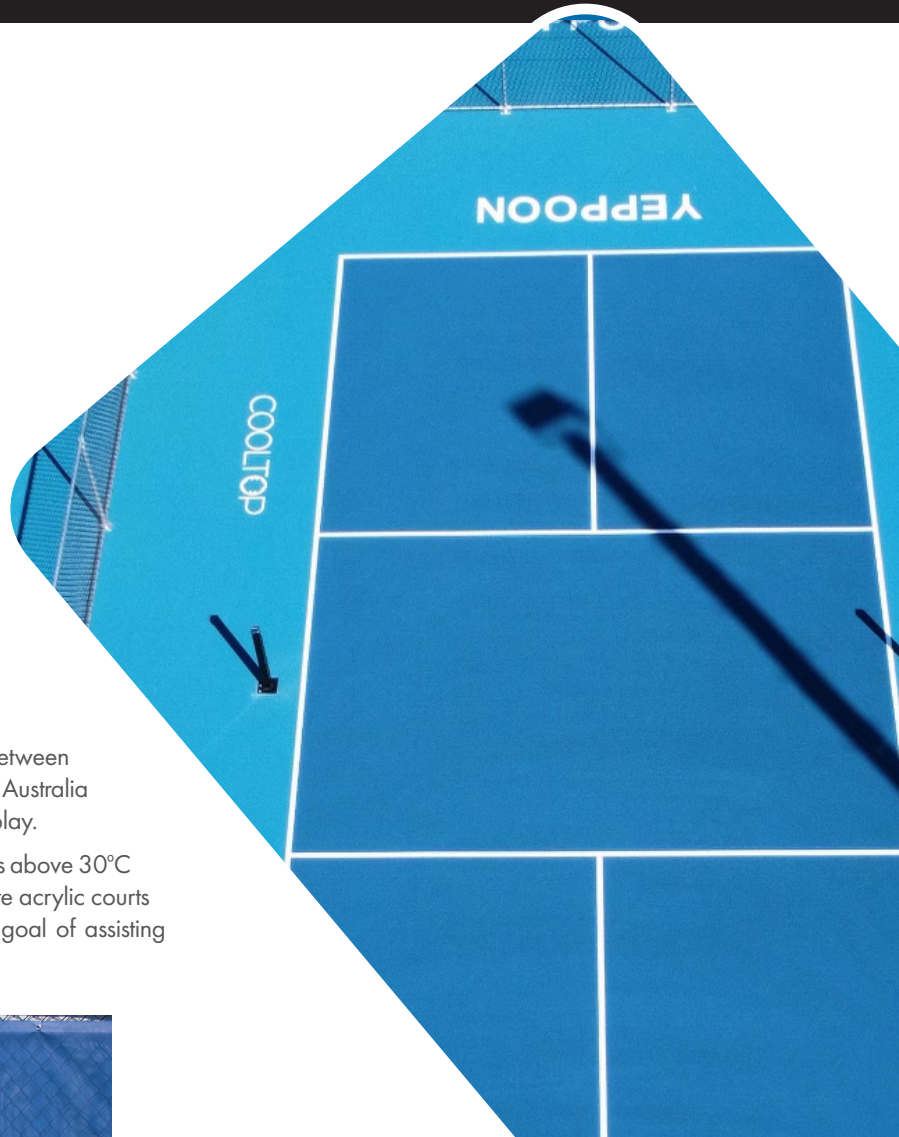


YEPPON PICKLEBALL & TENNIS COMPLEX
QUEENSLAND, AUSTRALIA

**COOLTOP AT THE 2023
YEPPON PICKLEBALL
FESTIVAL**

This year's Yeppon Pickleball Festival was hosted at the complex between the 14th and the 23rd of July, welcoming over 100 players from across Australia and NZ for 10 days of fun, competitions, coaching and tournament play.

Despite being played in July, Yeppon still frequently has temperatures above 30°C (86°F). Prior to the tournament, CoolTop was installed on their feature acrylic courts to reduce the surface temperature (via solar reflectance), with the goal of assisting in overall player comfort.



JULY 2023

United States: 150 Dascamb Rd., Andover, MA 01810 • Phone 978.623.9980

Australia: 30 – 32 Assembly Drive, Tullamarine, Victoria, 3043 Australia • Phone (Toll Free) 1800 786 617 • In Australia: +61 3 9338 9851

www.californiasportssurfaces.com | California Sports Surfaces, a division of ICP. Rev. 8.21.13



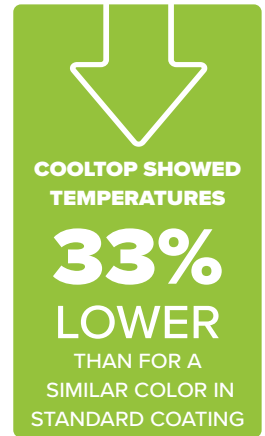
THE PROJECT

The 6 feature courts to the right of the marquees were surfaced with CoolTop in Nordic and Ice Blue colors.

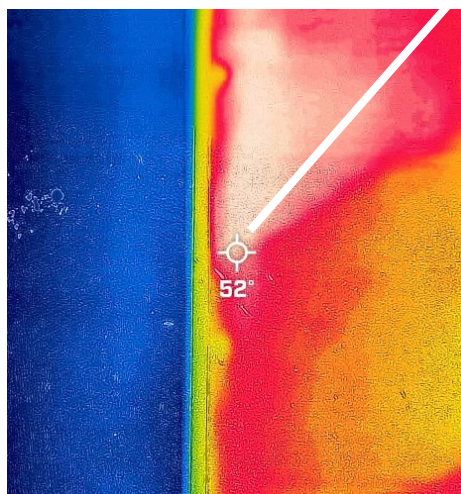
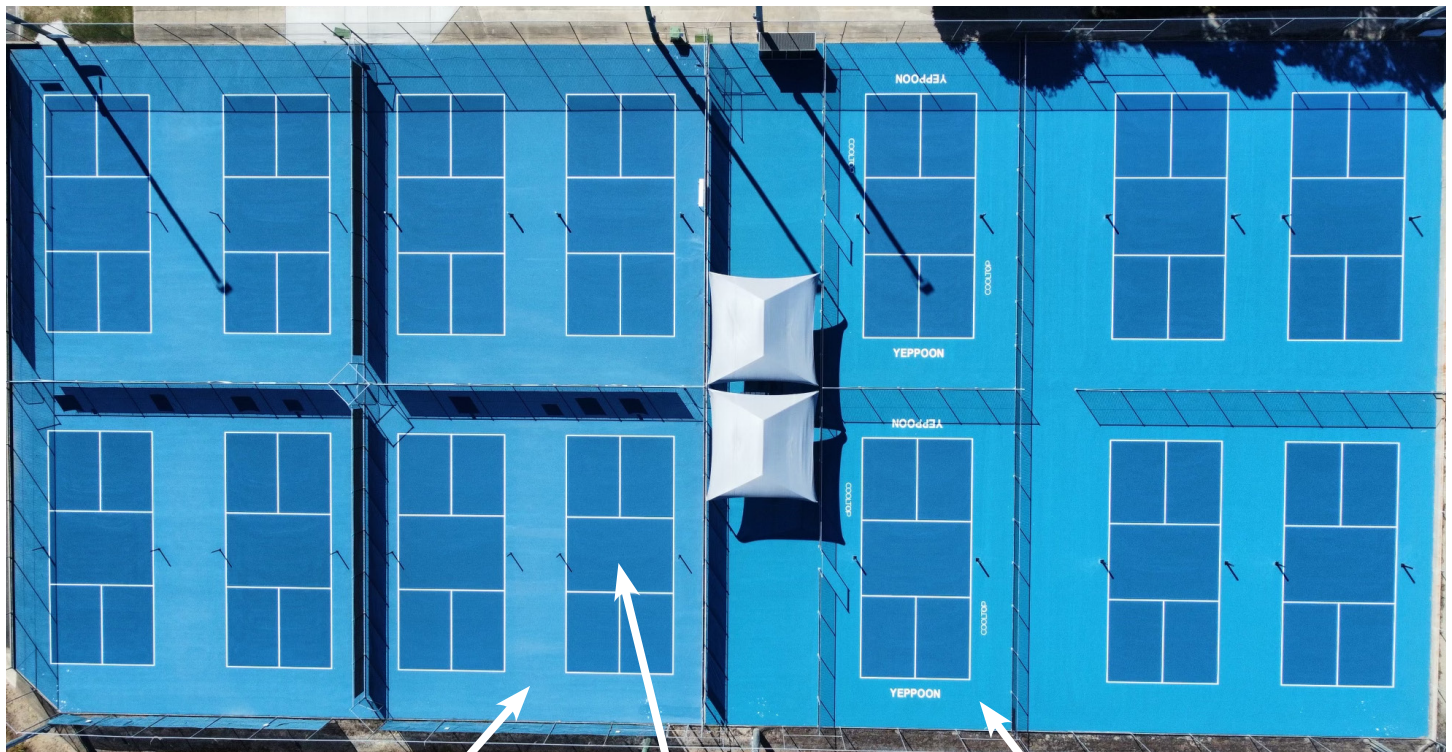
The 8 courts to the left were surfaced with standard Sea Blue acrylic surrounds and CoolTop Nordic Blue centres.

The court surface temperatures shown below were recorded on Friday 21st of July, at 1.30pm – with the ambient temperature of 30°C (86°F):

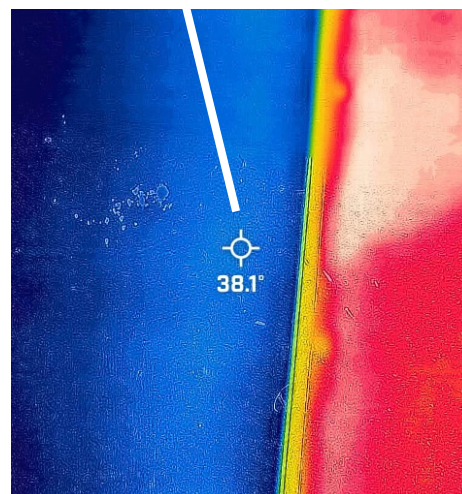
- Existing Sea Blue: 52°C (125.6°F);
- Nordic Blue: 38.1°C (100.6°F);
- Ice Blue: 34.4°C (93.9°F).



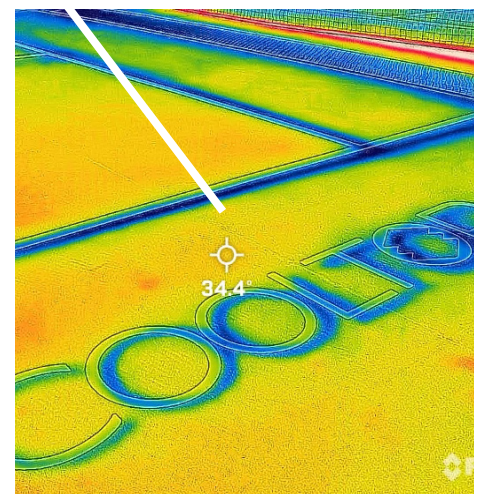
COOLTOP SHOWED TEMPERATURES 33% LOWER THAN FOR A SIMILAR COLOR IN STANDARD COATING



EXISTING SEA BLUE SURROUND



NORDIC BLUE CENTRE



ICE BLUE SURROUND

JULY 2023

United States: 150 Dascamb Rd., Andover, MA 01810 • Phone 978.623.9980
Australia: 30 – 32 Assembly Drive, Tullamarine, Victoria, 3043 Australia • Phone (Toll Free) 1800 786 617 • In Australia: +61 3 9338 9851

www.californiasportssurfaces.com | California Sports Surfaces, a division of ICP. Rev. 8.21.13





“ HAVING PLAYED PICKLEBALL OUTDOORS ON MANY SURFACES AND NOW EXPERIENCING PLAYING ON A SURFACE THAT HAS REFLECTIVE PIGMENTS, I FEEL THE CHANGE, IT TAKES THE HEAT OFF ME SO I CAN PUT IT INTO MY PLAY. ”

— KEL RASMUSSEN

FORMER DIRECTOR - PICKLEBALL ASSOCIATION AUSTRALIA

JULY 2023

United States: 150 Dascomb Rd., Andover, MA 01810 • Phone 978.623.9980
Australia: 30 – 32 Assembly Drive, Tullamarine, Victoria, 3043 • Phone (Toll Free) 1800 786 617 • In Australia: +61 3 9338 9851

www.californiasportssurfaces.com | California Sports Surfaces, a division of ICP. Rev. 8.21.13

