



DecoTurf[®]



ELITE SPORTS BUILDERS
PHOENIX, ARIZONA



SCOTTSDALE'S INDIAN SCHOOL PARK
SCOTTSDALE, ARIZONA



92,750 sq. ft.

THE PROJECT

Located in the City of Scottsdale, Arizona, the Indian School Park Tennis Center project consisted of a complete reconstruction of the existing tennis courts, including design.

The challenges for this project included a single point access for all construction activities, meaning the contractors had to funnel all construction activated through one 16' accessway and stage all materials and equipment within the worksite. The complex design meant the crew had to meet fixed, nonnegotiable hard points for elevations on the north, east and south sides of the complex.

The construction included a complete demolition of the existing facilities, regrading and compaction of site soils, supply and installation of a complete new LED lighting system, electrical components, potable water throughout the site, base materials and grading, post-tensioned concrete for the tennis courts, concrete hardscape areas, general site lighting, general site security equipment, two custom "tennis pro" sheds, including air conditioning, custom chain link fencing, custom player bench canopies, custom windscreen with logos, athletic equipment and the DecoTurf Surfacing System.

All work was supervised by two American Sports Builders Association Certified Tennis Court Builders (CTCB's).

SPECIAL REQUIREMENTS

This project required a high level of performance both in the surfacing system applied as well as the lighting system installed. The tennis pros needed custom mini-buildings, complete with electrical, lighting and air conditioning for staging and storage. The City of Scottsdale has a "dark sky" ordinance that the new lighting system was designed to comply with, while providing a professional level of court lighting. A number of top USPTA professionals play and teach at this facility, necessitating the installation of a high performance and customizable DecoTurf Surfacing System.

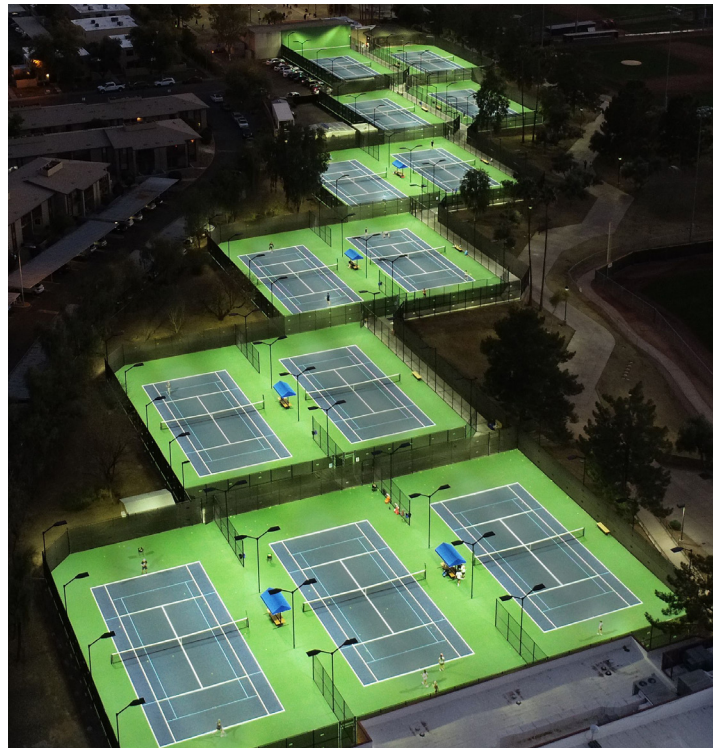


SOLUTION

The finished colors were Dark Blue for the in bounds areas accented by Dark Green in the out of bounds areas. White was chosen for the lines. Use of the facility increased greatly upon completion of the project by the general public and the new center attracted additional tournaments and professional attention.

The Indian School Park & Tennis Center took home the 2021 American Sports Builders Association (ASBA) Outdoor Tennis Facility Bronze Award, presented to those whom best exemplify construction excellence.

Additionally, the project was awarded the United States Tennis Association (USTA)'s Municipal Facility of the Year Award.



FEBRUARY 2021

United States: 150 Dascomb Rd., Andover, MA 01810 • Phone 978.623.9980
Australia: 30 – 32 Assembly Drive, Tullamarine, Victoria, 3043 Australia • Phone (Toll Free) 1800 786 617 • In Australia: +61 3 9338 9851

www.californiasportssurfaces.com | California Sports Surfaces, a division of ICP. Rev. 9.6.23

