



Plexipave[®]

CUSTOM COLORS - INKY BLUE, MAGENTA, AND SEAL BLACK



LASER SPORT SURFACING
WWW.LASERSTRIPING.COM



WOLVERINE PICKLEBALL - WOLVERINEPICKLEBALL.COM
ANN ARBOR, MICHIGAN



28,000 f²
12 INDOOR PICKLEBALL COURTS



THE PROJECT

The Wolverine Pickleball project is located in the City of Ann Arbor, Michigan. This project consisted of 12 brand new indoor pickleball courts, installed on fiber reinforced concrete. The facility not only boasts pickleball, but many outdoor activities as well. This project was a culmination of many people coming together to create an amazing environment.

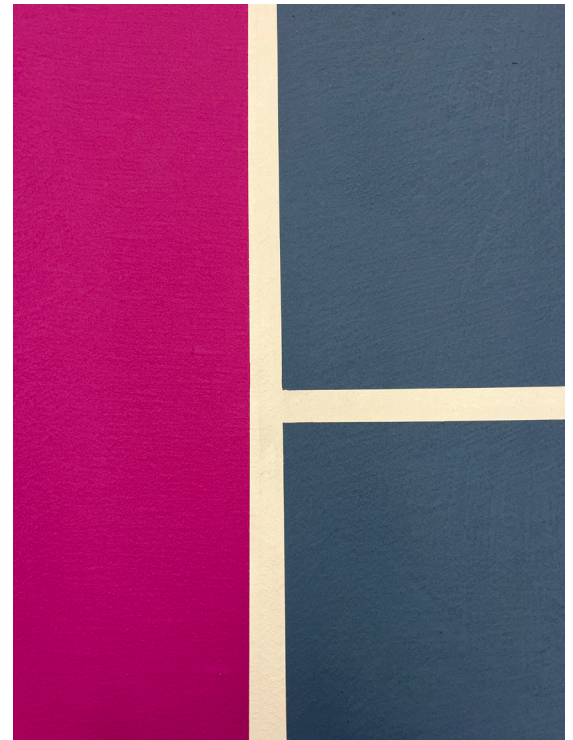


SPECIAL REQUIREMENTS

Wolverine Pickleball is one of the largest, most state-of-the-art pickleball facilities in Michigan, so when it came to court surfacing, nothing but the best was acceptable. The 12 indoor courts were constructed with fiber reinforced concrete and the Plexicushion coating system. The colors - Inky Blue, Magenta, and Seal Black - were ordered custom, to match the logo of the Wolverine Pickleball Club.

SOLUTION

This finish project has turned this indoor facility into one of the busiest in the area. Wolverine Pickleball has become a community full of supportive, all level pickleball players; they are now conducting high level tournaments, as well as leagues, and instructive classes. Players truly enjoy the state-of-the-art cushion surface.



DECEMBER 2023

United States: 150 Dascomb Rd., Andover, MA 01810 • Phone 978.623.9980
Australia: 30 – 32 Assembly Drive, Tullamarine, Victoria, 3043 Australia • Phone (Toll Free) 1800 786 617 • In Australia: +61 3 9338 9851

www.californiasportssurfaces.com | California Sports Surfaces, a division of ICP. Rev. 4.2.24

