

# PLEXIBOND®



Plexibond By  
California Sports  
Surfaces:

**STABILIZE  
THE SURFACE,  
STRENGTHEN  
THE GAME.**



**CALIFORNIA®**  
SPORTS SURFACES



## PREVENT PROBLEMS BEFORE THEY START:

Resurfacing a damaged court can be costly and time-consuming. Plexibond gives you a chance to **stop minor surface cracks from expanding**—especially stripping cracks that commonly appear in new asphalt due to compaction inconsistencies. When used as part of your initial construction plan, Plexibond helps:



**PREVENT  
CRACKS FROM  
APPEARING**



**STABILIZE  
THE ASPHALT  
SUBSTRATE**



**EXTEND THE  
SURFACE LIFESPAN  
FROM DAY 1**



**LOCK DOWN  
FIBERGLASS  
MESH**



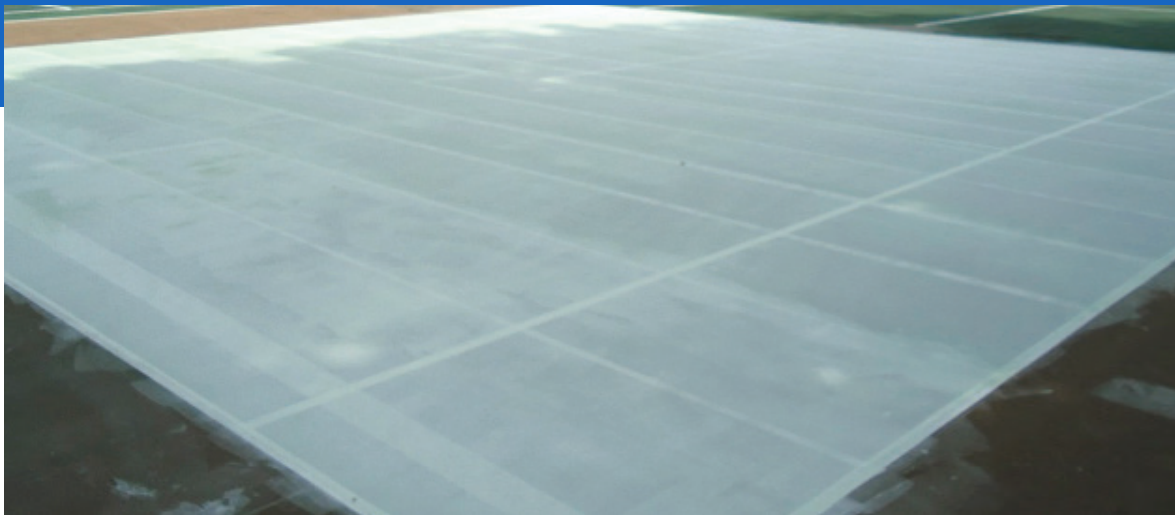
**REINFORCE  
SURFACES**



**OPTIMIZE  
COVERAGE**



**PROVIDE A  
VERSATILE  
APPLICATION**



## KEY FEATURES & BENEFITS:

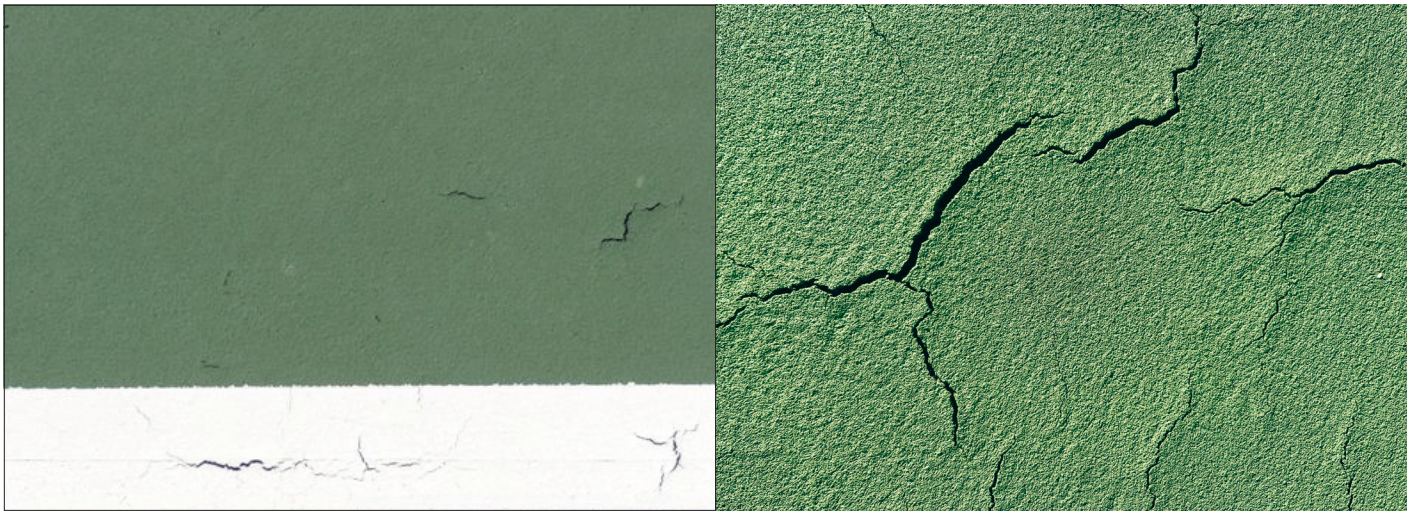
**The Only Product Designed to Lock Down Fiberglass Mesh Repairs** – Plexibond is the only coating specifically formulated to secure fiberglass mesh, making it the best option for crack mitigation and long-term performance.

**Ideal for Minor Surface-Cracking & Stripping Cracks** – While not intended for large structural cracks, Plexibond is perfect for reinforcing surfaces to extend the life of your court.

**Optimized Coverage for Standard-Sized Courts** – It takes approximately 18 rolls of fiberglass with Plexibond per standard tennis court, ensuring proper reinforcement and a reliable foundation.

**Versatile Application** – Plexibond can be used with Wipe-Out Stain Blocker for uncoated concrete, asphalt or integrated with a cushion system for added player comfort. Plexibond is especially effective on asphalt courts—where most surface cracking and stripping cracks occur. *Does not address structural cracking.*





## THE TRUSTED CHOICE FOR PROTECTION—BEFORE AND AFTER CRACKS APPEAR

When it comes to preparing your court for a long-lasting, high-performance surface, the Plexibond system is the industry's go-to solution for stabilizing imperfect surfaces. This tried-and-true technology is specifically designed to lock down fiberglass mesh, helping to hide minor surface-cracking and stripping cracks in asphalt and concrete. Whether you're constructing a new court or refreshing an existing one, the Plexibond system stabilizes the surface and prevents problems before they start—or fixes the ones already there.



SCAN TO VIEW RESOURCES  
& APPLICATION VIDEO



### DID YOU KNOW?

Plexibond isn't just for repairs—it's **your first line of defense**. Apply it during new court construction to help lock down the surface and prevent cracking before it starts.

### Backed by Installation & Specification Support

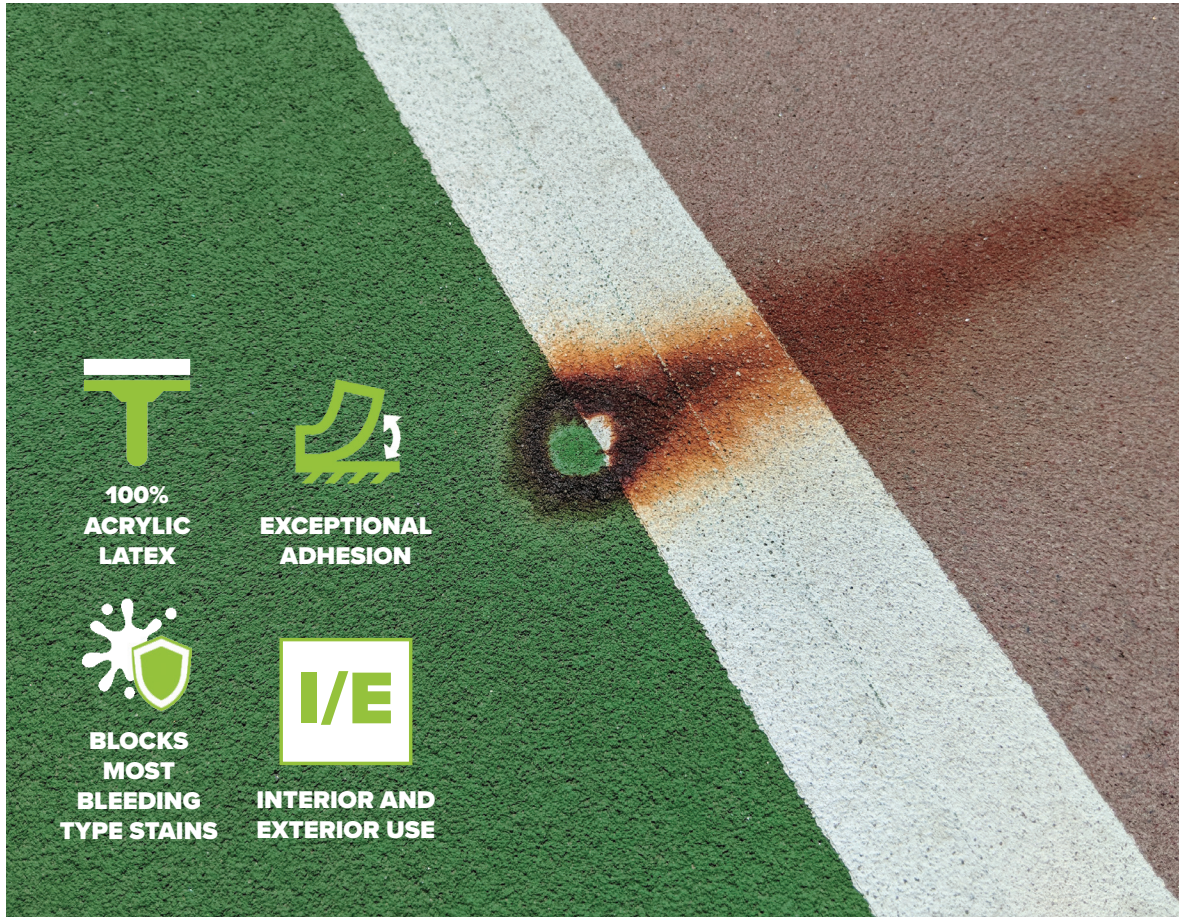
A full installation guide and CSI-formatted specification are available to ensure proper application for long-lasting results.



## PLEXIBOND AND WIPE-OUT® STAIN BLOCKER

If you're resurfacing uncoated concrete or asphalt, Wipe-Out Stain Blocker is a game-changer. It inhibits contaminants from migrating through the subsurface, preventing unsightly stains from reflecting through the fiberglass crack repair. Together, Wipe-Out Stain Blocker + Plexibond create a strong, stable foundation for your courts.

*WE'RE READY TO HELP YOU WITH YOUR NEXT PROJECT!*



### OUR COMMITMENT TO QUALITY

Since 1953, California Sports Surfaces has set the industry standard, providing customers globally with a premier offering of acrylic surface systems.

From professional tournaments to neighborhood courts, CSS and its iconic brands – DecoTurf®, Plexipave®, Rebound Ace®, CoolTop®, Plexitrac®, and Premier Sports Coatings® – deliver cutting-edge surface technology that meets the demands of athletes at every level. CSS is dedicated to evolving the game of play through innovation, performance, and unmatched quality.

**United States:** 150 Dascomb Rd., Andover, MA 01810 • Phone 978.623.9980  
**Australia:** 67 Assembly Drive, Tullamarine, Victoria, 3043 • Phone (Toll Free) 1800 786 617 • In Australia: +61 3 9338 9851

[www.icpgroup.com](http://www.icpgroup.com)  
©2025 ICP Group



Part# 971-99 6.25